

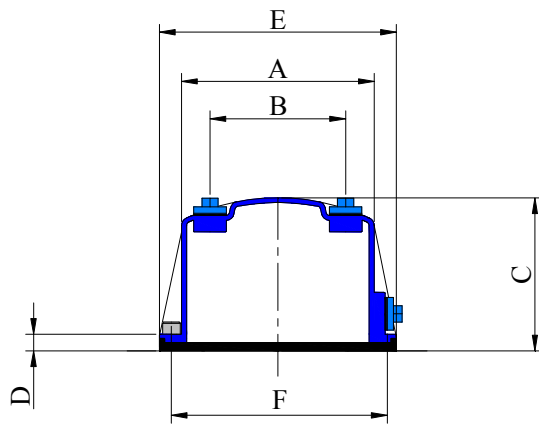
9.4 DD-KP cap



DD-KP cap

Protection caps for **TTM** and **TTM-F** anchorages are designed to allow the complete grouting of grease of the anchorage. Their small dimensions allow a localized filling with small quantities of grease to protect the locking. **DD-KP** cap to protected TTM and TTM-F anchorages on distribution plates: oxy-fuel cut, painted and provided with fixing holes.

DD-KP caps allow the localized grouting of grease and an easy vent, as it is provided with threaded vent caps both on the body and on the upper part of the cap.



Cap type	A (mm)	B (mm)	C (mm)	D (mm)	E (mm)	F (mm)	No. of holes	Screw type
DD0415KP	122 ±2.0	68 ±2.0	140 ±4.0	13 ±1.5	150 ±2.0	139 ±0.5	5	VTCEI M6x20
DD0715KP	140 ±2.0	89 ±2.0	140 ±4.0	13 ±1.5	180 ±2.0	161 ±0.5	5	VTCEI M10x20
DD0915KP	183 ±2.0	130 ±2.0	140 ±4.0	13 ±1.5	230 ±2.0	206 ±0.5	6	VTCEI M10x20
DD1215KP	183 ±2.0	130 ±2.0	140 ±4.0	13 ±1.5	230 ±2.0	206 ±0.5	6	VTCEI M10x20
DD1515KP	200 ±2.0	145 ±2.0	145 ±4.0	22 ±1.5	260 ±2.0	236 ±0.5	6	VTCEI M12X30

Subject to change

Further data available on request

9.5 “DD-SK” gaskets



Gasket type	Out. diam. (mm)	Inside diam. (mm)	Tot. thickness (mm)	Thickness (mm)	No. of holes	Screw type
DD0415SK	156 ±2.0	113 ±2.0	8 ±2.0	4 ±2.5	5	VTCEI M6x20
DD0715SK	184 ±2.0	131 ±2.0	8 ±2.0	4 ±2.5	5	VTCEI M10x20
DD0915SK	228 ±2.5	175 ±2.5	8 ±2.0	4 ±2.5	6	VTCEI M10x20
DD1215SK	228 ±2.5	175 ±2.5	8 ±2.0	4 ±2.5	6	VTCEI M10x20
DD1515SK	262 ±3.0	190 ±3.0	9 ±2.0	5 ±2.5	6	VTCEI M12X30

Subject to change

Further data available on request