

14.0 - "G" CONNECTIONS



19G15 coupling plate

The "G" connection is made of the following parts: casting, anchor plate and connection, wedges, restressing metallic connection and H.D.P.E. or steel connection.

Castings have a turned plane for the plate, holes for connection to cap and formwork and a threaded grouting hole. Castings are in spheroid cast iron EN-GJS 500-7 EN-JS-1050, which offers a high resistance to stress. Being weldable, it guarantees the maximum safety during installation.

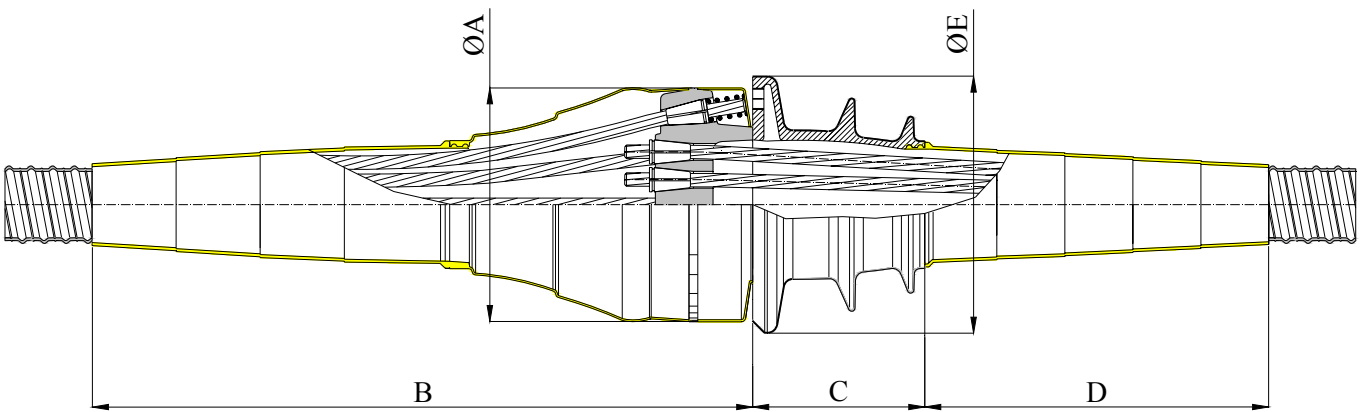
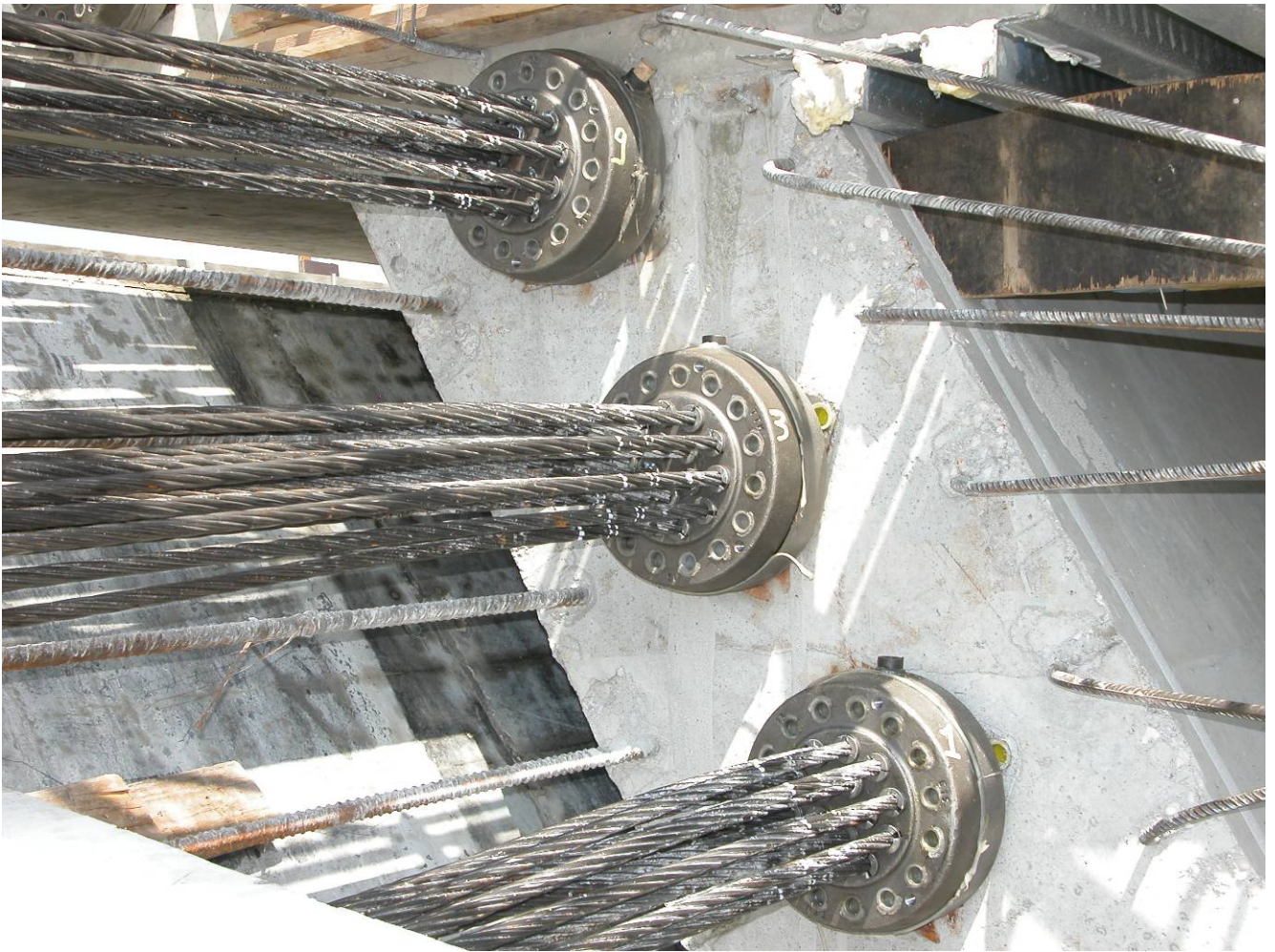
Strands are blocked on a distribution plate with truncated cone holes in steel C40-45 UNI EN 10083/1 and by means of wedges in steel 16NiCr4Pb UNI EN 10277-4.

The anchorage and the sheaths are connected by means of a truncated cone connection that guarantees a correct deviation of the strands, minimizing the values of losses. The connection is made of H.D.P.E.

All castings have threaded holes on the plane to allow an easy fixing to the formwork by means of bolts.

All castings have a gas threaded hole for grouting to allow the connection to the several solutions available for grouting.

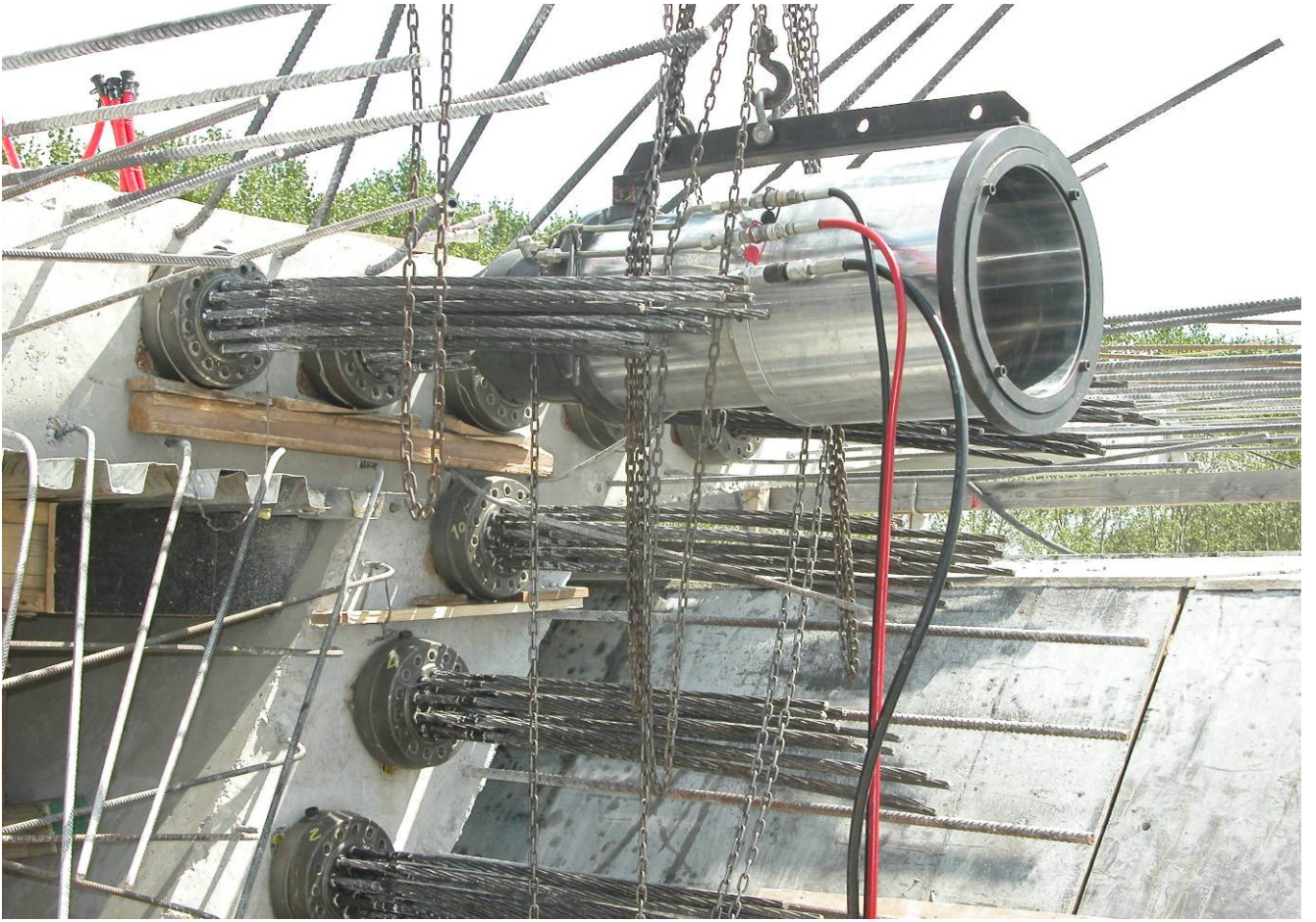




Type	A (mm.)	B (mm.)	C (mm.)	D (mm.)	E (mm.)	Sheath diam. (mm.)
4G15	155	400	103	300	160	45-50
7G15	215	450	133	340	200	62/67
9G15	235	550	175	350	235	72/77
12G15	248	650	185	385	265	80/85
15G15	265	750	197	430	290	85/90
19G15	280	880	215	430	320	95/100
22G15	315	1000	240	490	355	100/105
27G15	340	1150	277	500	380	110/115

Our company reserves the right to change our products and specifications without any previous notice.
 All the heads comply with the Circular of 15th October 1996 no. 252 AA.GG./S.T.C.

(Measures in mm.)



"G" connections - Application details



Assembled coupler



19G15 coupler

The coupler is made of a forged plate where tensioning and restressing holes are made. Strands are restressed by means of a spring mechanisms which restrains the strand when it is inserted into the external holes. Restressing wedges with springs are protected by a steel casing which makes them tight.



19G15 coupler under tensioning