

## 24.0 - "L" SERIES ANCHORAGES



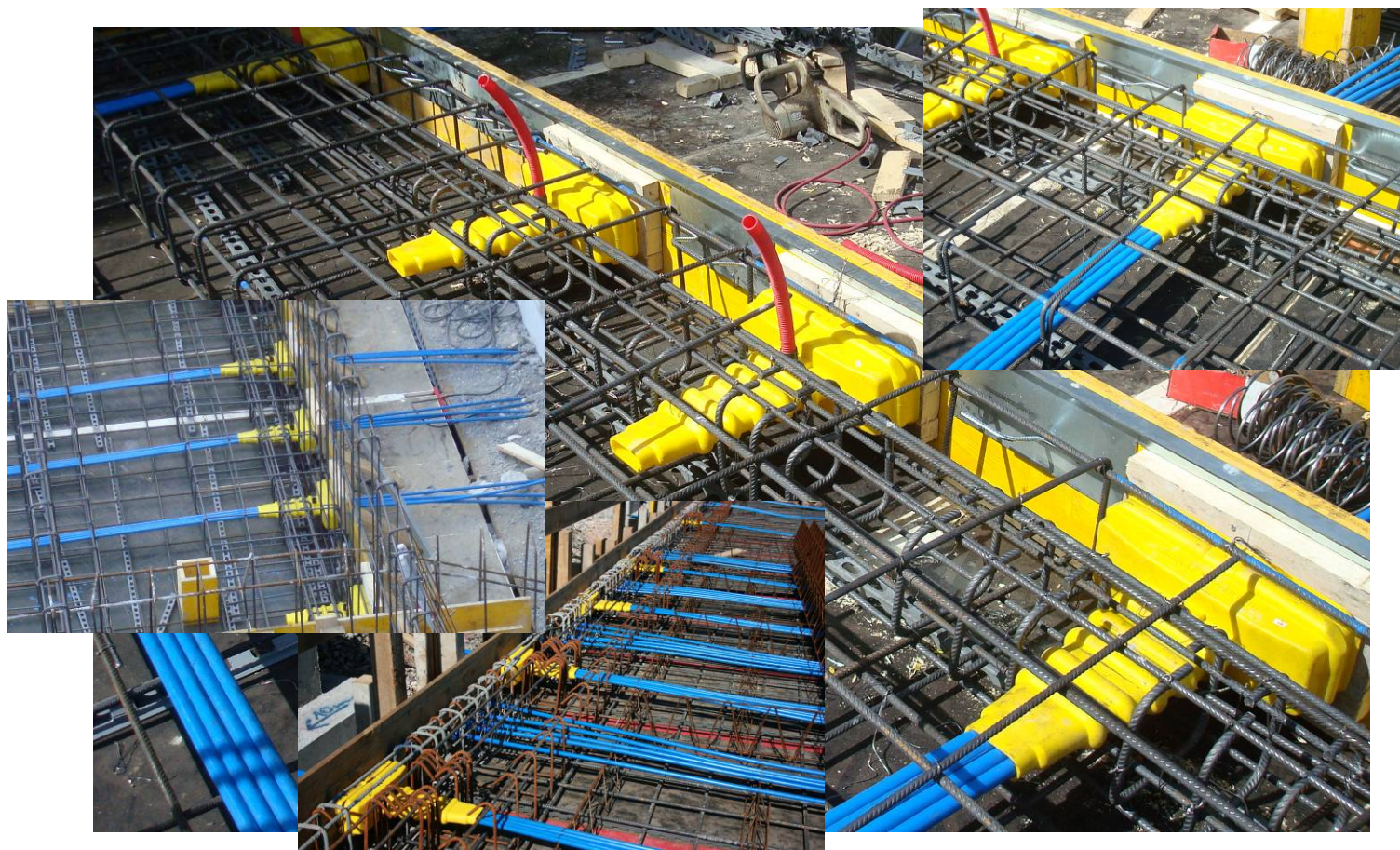
*(Post-tensioning for plates)*

*"L" series plates are designed for the application to plates or slabs. The main characteristic of this anchorage is its dimensions AxB, where the shorter side is suitable for limited thickness plates. They are made of polyethylene and can be used with strands having several types of protection:*

- *metallic corrugated sheaths,*
- *galvanized metallic corrugated sheaths,*
- *polyethylene sheaths,*
- *greased and polyethylene covered strands,*

*The anchorage is made of a polyethylene protection that offers support to the steel anchor plate in steel **C40-45 UNI EN 10083/1** which has a proper transfer surface to transfer load directly to concrete by means of the recess provided by the polyethylene protection.*

*It can be applied with grouted bonded post-tensioning and unbonded post-tensioning with greased and polyethylene covered strands. The anchorage is suitable for the connection to the formwork by means of special locks and it is provided with grouting devices that allow both grouting and vent on the slab*

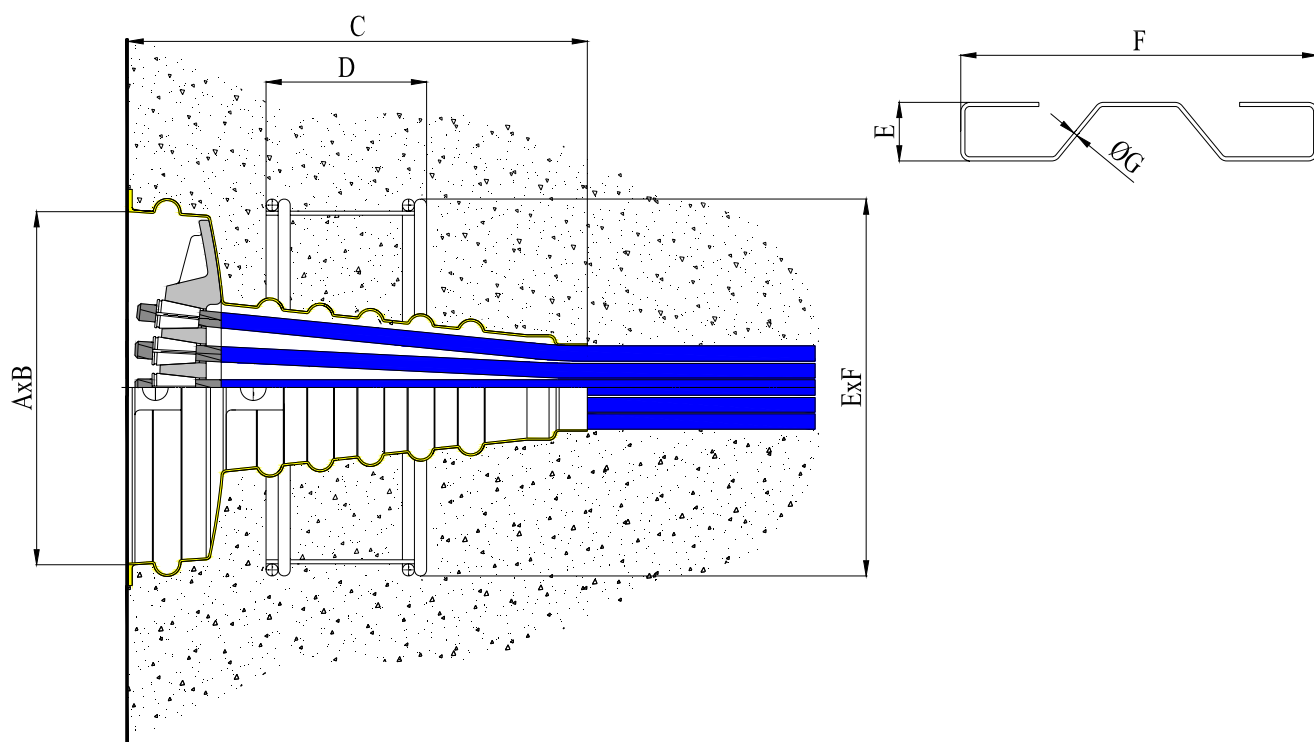


## 24.1 - "L" series unbonded anchorages (Unbonded post-tensioning)



4-5L15 anchorage

The 4-5L15 anchorage allows to install 4 and 5 strand anchorages that are encapsulated in polyethylene by installing a single anchorage that can be connected to the polyethylene-covered strands. It can be easily connected to the formwork and it is easy to install, grout and tension with a jack, strand by strand.



Type	Ultimate load			A	B	C	D	E	F	G	H	I	L	M
	T15 259 per cable	T15S 279 per cable	T15C 300 per cable											
	(KN)	(KN)	(KN)	(mm.)	(mm.)	(mm.)	(mm.)	(mm.)	(mm.)	(mm.)	pc.	(mm.)	(mm.)	(mm.)
<b>3L15</b>	777	837	900	350	120	360	180	200	455	78x30	4	30	78	10
<b>4L15</b>	1036	1116	1200	350	120	360	180	200	455	78x30	4	30	78	12
<b>5L15</b>	1295	1395	1500	350	120	360	180	200	455	96x30	4	30	90	12

Our company reserves the right to change our products and specifications without any previous notice

(Measures in mm.)





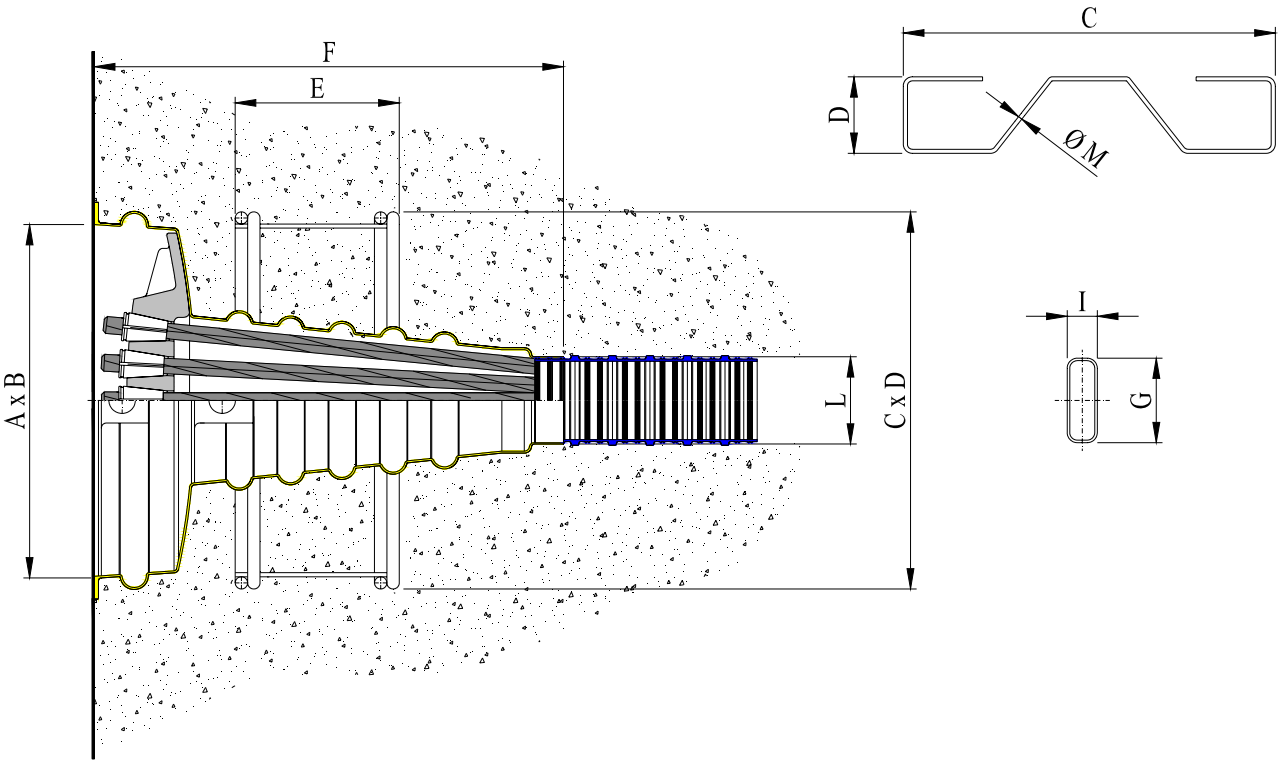


**24.3 - "L" series bonded anchorages**  
(Bonded post-tensioning)



4-5L15 anchorage

The 4-5L15 anchorage is produced for the application to slabs or where the cable covering thickness requires the use of flat SL steel sheaths or SP polyethylene sheaths. It allows to install 4 or 5 strand anchorages encapsulated in polyethylene by installing a single anchorage. It can be easily connected to the formwork and it is easy to install, grout and tension with a jack, strand by strand.



Type	Ultimate load			A	B	C	D	E	F	G	H	I	L	M
	T15	T15S	T15C											
	259	279	307											
	per cable	per cable	per cable											
	(KN)	(KN)	(KN)	(mm.)	(mm.)	(mm.)	(mm.)	(mm.)	(mm.)	(mm.)	pc.	(mm.)	(mm.)	(mm.)
3L15	777	837	900	350	120	360	180	200	455	78x30	4	30	78	10
4L15	1036	1116	1200	350	120	360	180	200	455	78x30	4	30	78	12
5L15	1295	1395	1500	350	120	360	180	200	455	96x30	4	30	90	12

Our company reserves the right to change our products and specifications without any previous notice (Measures in mm.)



*5L15 anchorage, front view*



*5L15 anchorage, rear view*