

9.0 PROTECTION CAPS

In an aggressive environment, the anchor head must be immediately protected, both with temporary and with permanent anchors. The protection inside the heat provides an efficient connection with the free length protection, in order to protect the small reinforcement section below and through the bearing plate. The grouting of the back part of the anchorage can be carried out from the central hole, which also allows air to be released. The back filling of the anchorage, together with the containment offered by the under plate protection, represent the correct application to guarantee the necessary protection. If no reloading and stressing controls are required, resins, mixtures and other sealing products can be inserted into the head cap. On the contrary, if reloading and stressing controls are required, the protection of the external part of the head, including the cap and its content, must be removable. It must be possible to reload the cap with the anticorrosion product.



TTR-E 450 cap

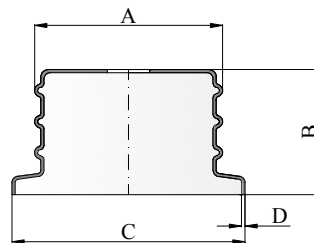


TTR-E 100 cap



DD-KP cap

9.1 DD-CP short cap

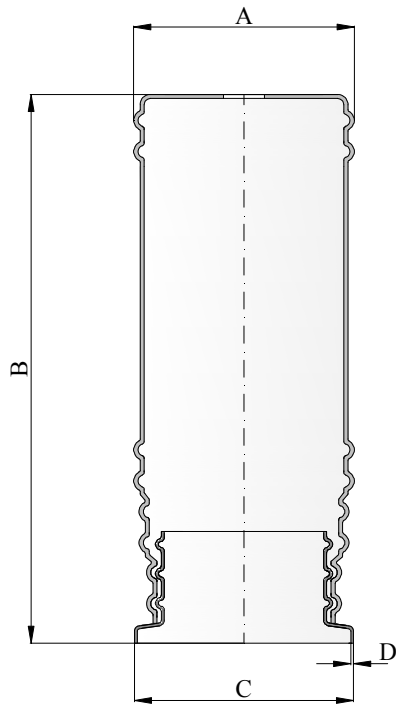


Short cap type	A (mm)	B (mm)	C (mm)	D (mm)	Plate type	OR type
DD0415CP	180 ±2.0	130 ±2.0	225±2.0	5 ±1.5	2-3-4 TTR-E	DD OR4TP15
DD0615CP	200 ±2.0	130 ±2.0	265±2.0	5 ±1.5	5TTR-E	DD OR5TP15
DD0715CP	215 ±2.0	130 ±2.0	295 ±2.0	5 ±1.5	6TTR-E	DD OR7TP15
DD0815CP	236 ±2.0	143 ±2.0	315 ±2.0	5 ±1.5	7TTR-E	DD OR8TP15
DD0915CP	270 ±2.0	121 ±2.0	320 ±2.0	5 ±1.5	8TTR-E	DD OR9TP15

Subject to change

Further data available on request

9.2 DD-EX long cap



Long cap type	Short cap type	A (mm)	B (mm)	C (mm)	D (mm)	Plate type	OR type
DD234EX	DD0415CP	220 ±2.0	550 ±2.0	225±2.0	5 ±1.5	2-3-4 TTR-E	DD OR4TP15
DD005EX	DD0615CP	220 ±2.0	450 ±2.0	265 ±2.0	5 ±1.5	5TTR-E	DD OR5TP15
DD006EX	DD0715CP	280 ±2.0	550 ±2.0	295 ±2.0	5 ±1.5	6TTR-E	DD OR7TP15
DD007EX	DD0815CP	280 ±2.0	500 ±2.0	315 ±2.0	5 ±1.5	7TTR-E	DD OR8TP15
DD008EX	DD0915CP	280 ±2.0	450 ±2.0	320 ±2.0	5 ±1.5	8TTR-E	DD OR9TP15

Subject to change

Further data available on request

9.3 Seal OR



Gasket type	Reference	Medium diam. (mm)	Outside diameter (mm)	Inside diameter (mm)	Wire (mm)	Plate type
OR 191x8	DD OR4TP15	191 ± 2	199 ± 2	183 ± 2	8 ±0.5	2-3-4 TTR-E
OR 216x8	DD OR5TP15	216 ± 2	224 ± 2	208 ± 2	8 ±0.5	5TTR-E
OR 256x8	DD OR7TP15	256 ± 2	264 ± 2	248 ± 2	8 ±0.5	6TTR-E
OR 276x8	DD OR8TP15	276 ± 2	284 ± 2	268 ± 2	8 ±0.5	7TTR-E
OR 286x8	DD OR9TP15	286 ± 2	294 ± 2	278 ± 2	8 ±0.5	8TTR-E

Subject to change

Further data available on request

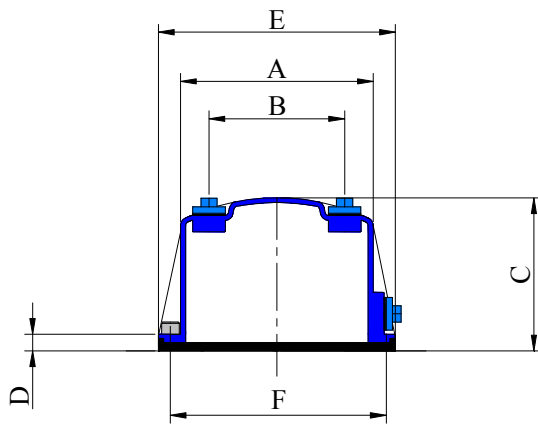
9.4 DD-KP cap



DD-KP cap

Protection caps for **TTM** and **TTM-F** anchorages are designed to allow the complete grouting of grease of the anchorage. Their small dimensions allow a localized filling with small quantities of grease to protect the locking. **DD-KP** cap to protected TTM and TTM-F anchorages on distribution plates: oxy-fuel cut, painted and provided with fixing holes.

DD-KP caps allow the localized grouting of grease and an easy vent, as it is provided with threaded vent caps both on the body and on the upper part of the cap.



Cap type	A (mm)	B (mm)	C (mm)	D (mm)	E (mm)	F (mm)	No. of holes	Screw type
DD0415KP	122 ±2.0	68 ±2.0	140 ±4.0	13 ±1.5	150 ±2.0	139 ±0.5	5	VTCEI M6x20
DD0715KP	140 ±2.0	89 ±2.0	140 ±4.0	13 ±1.5	180 ±2.0	161 ±0.5	5	VTCEI M10x20
DD0915KP	183 ±2.0	130 ±2.0	140 ±4.0	13 ±1.5	230 ±2.0	206 ±0.5	6	VTCEI M10x20
DD1215KP	183 ±2.0	130 ±2.0	140 ±4.0	13 ±1.5	230 ±2.0	206 ±0.5	6	VTCEI M10x20
DD1515KP	200 ±2.0	145 ±2.0	145 ±4.0	22 ±1.5	260 ±2.0	236 ±0.5	6	VTCEI M12X30

Subject to change

Further data available on request

9.5 “DD-SK” gaskets



Gasket type	Out. diam. (mm)	Inside diam. (mm)	Tot. thickness (mm)	Thickness (mm)	No. of holes	Screw type
DD0415SK	156 ±2.0	113 ±2.0	8 ±2.0	4 ±2.5	5	VTCEI M6x20
DD0715SK	184 ±2.0	131 ±2.0	8 ±2.0	4 ±2.5	5	VTCEI M10x20
DD0915SK	228 ±2.5	175 ±2.5	8 ±2.0	4 ±2.5	6	VTCEI M10x20
DD1215SK	228 ±2.5	175 ±2.5	8 ±2.0	4 ±2.5	6	VTCEI M10x20
DD1515SK	262 ±3.0	190 ±3.0	9 ±2.0	5 ±2.5	6	VTCEI M12X30

Subject to change

Further data available on request