

"ED" series 1ED15-A18 single strand anchorages
(Post tensione aderente)



Ancoraggio attivo 1ED15-A18 assemblato

Anchoring: active member, such as "1ED15-A18", is made with the anchor strand and inserted in a polyethylene conduit, application environments where protection is required in the casting complex obtained by passivation. The anchor "1ED15-A18" is adherent, is provided on (stretching the side) for attachment to the mast step with conical or rectangular mold. The application is typical of industrial flooring, partitions or floors made. The anchor has a threaded cap closure, which ensures a more energetic close to the containment of the fat, can be installed on site by qualified technicians.

Corrosion protection levels on "A" series anchorages:

Protection level	Anchorage type	Anchorage 1E15	Anchorage 1ED15	Anchorage 1EX15	Anchorage 1EXD15	Metallic sheath	Polyethylene sheath	Bonded strand	Unbonded strand
1	1E15-A5	X				X		X	
1	1ED15-A4		X						X
2	1ED15-A14		X			X		X	
2	1ED15-A18		X				X	X	
3	1E15-A1	X							X
4	1E15-A7	X					X	X	
5	1EXD15-A12				X	X		X	
5	1EXD15-A17				X		X	X	
5	1EX15-A13			X		X		X	
5	1EX15-A15			X		X		X	
5	1EX15-A16			X		X		X	
5	1EX16-A6			X			X	X	
5	1EX15-A10			X			X	X	
5	1EX15-A11			X			X	X	
6	1EXD15-A3				X				X
6	1EX15-A2			X					X
6	1EX15-A8			X					X
6	1EX15-A9			X					X

Level 5 and 6: totally encapsulated cables, anchorage 1EX15 or 1EXD15 and greased cable covered in polyethylene represent the maximum protection level

20.5 - "B" SERIES THROUGH ANCHORAGES

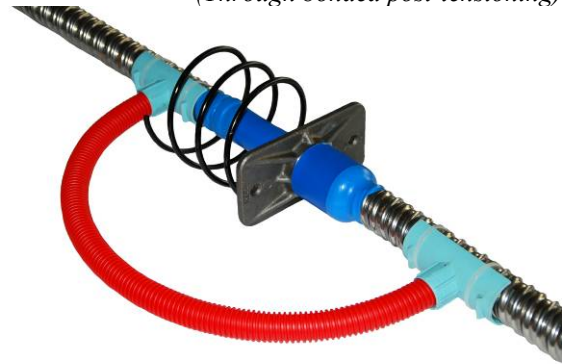
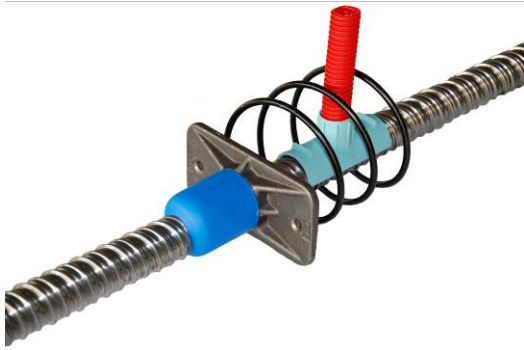
Application of "E" series anchorages for 1E15-B1 through strands
(Through unbonded post-tensioning)



1E15-B1 assembled through anchorage

The anchorage: active, unbonded and through, "1E15-B1" type. It is provided with a wedge protection cap. The application allows to install unbonded single strand anchorages with through strand. The application is typical of industrial floors, diaphragms or continuous grouting slabs, where on a continuous cable several "1E15-B1" anchorages are installed in series. This solution requires special TTM 280KN tensioning jacks that can operate on a continuous cable. A double cable protection is guaranteed. The cable is greased and covered in polyethylene.

Application of "E" series anchorages for 1E15-B2 through strands
(Through bonded post-tensioning)



1E15-B2 assembled through anchorage

The anchorage: **active, bonded and through, "1E15-B2" type**. It is provided with a wedge protection cap. The application allows to install bonded single strand anchorages with through strand in an environment where a cable and anchorage corrosion protection is required, which only relies on the cement coverage of the components. The application is typical of industrial floors, diaphragms or continuous grouting slabs in an environment where water is present, and where on a continuous cable several "1E15-B2" anchorages are installed in series. This solution requires special tensioning jacks that can operate on a continuous cable. The cable is provided with a steel protection sheath, provided with proper grouting and vent points.

Application of "E" series anchorages for 1E15-B3 through strands
(Through bonded post-tensioning)



1E15-B3 assembled through anchorage

The anchorage: **active, bonded and through, "1E15-B3" type**. It is provided with a wedge protection cap., The application allows to install bonded single strand anchorages with through strand in an environment where a cable only corrosion protection is required by means of a polyethylene corrugated sheath. The application is typical of industrial floors, diaphragms or continuous grouting slabs in an environment where water is present, and where on a continuous cable several "1E15-B3" anchorages are installed in series. This solution requires special tensioning jacks that can operate on a continuous cable. The cable is provided with a polyethylene protection sheath on the whole length, which must be provided with proper grouting and vent points.

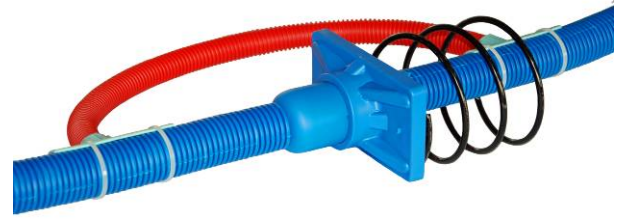
Application of "EX" series anchorages for 1EX15-B4 through strands
(Through bonded post-tensioning)



1EX15-B4 assembled through anchorage

The anchorage: **active, bonded and through, "1EX15-B4" type**. It is provided with a wedge protection cap and the anchorage totally encapsulated with polyethylene. The application allows to install bonded single strand anchorages with through strand in an environment where a double anchorage only corrosion protection is required. The application is typical of industrial floors, diaphragms or continuous grouting slabs in an environment where water is present, and where on a continuous cable several "1EX15-B4" anchorages are installed in series. This solution requires special tensioning jacks that can operate on a continuous cable. The cable is provided with a steel protection sheath, provided with proper grouting and vent points.

Application of "EX" series anchorages for 1EX15-B5 through strands
(Encapsulated through bonded post-tensioning)



1XE15-B5 assembled through anchorage

The anchorage: **active, bonded and through, "1XE15-B5" type**. It is provided with a wedge protection cap and the anchorage totally encapsulated with polyethylene. The application allows to install bonded single strand anchorages with through strand in an environment where a double anchorage and cable corrosion protection is required (polyethylene encapsulation). The application is typical of industrial floors, diaphragms or continuous grouting slabs in a corrosive environment where water is present, and where on a continuous cable several "1EX15-B5" anchorages are installed in series. This solution requires special tensioning jacks that can operate on a continuous cable. The cable is provided with a polyethylene protection sheath, provided with proper grouting and vent points.

Application of "EX" series anchorages for 1EX15-B6 through strands
(Encapsulated through unbonded post-tensioning)



1XE15-B6 assembled through anchorage

The anchorage: **active, encapsulated, unbonded and through, "1XE15-B6" type**. It is provided with a wedge protection cap and the anchorage totally encapsulated with polyethylene. The application allows to install unbonded single strand anchorages with through strand in an environment where a double anchorage and cable corrosion protection is required (polyethylene encapsulation). The application is typical of industrial floors, diaphragms or continuous grouting slabs in a highly corrosive environment, where on a continuous cable several "1EX15-B2" anchorages are installed in series. This solution requires special tensioning jacks that can operate on a continuous cable. The system is provided with an encapsulation on its whole length.

Corrosion protection levels on "B" series anchorages:

Protection level	Type of protection	Anchorage type	Anchorage 1E15	Anchorage 1EX15	Metallic sheath	Polyethylene sheath	Bonded strand	Unbonded strand
1		1E15-B2	X		X		X	
2		1E15-B1	X					X
3		1EX15-B4		X	X		X	
4		1E15-B3	X			X	X	
5	Encapsulated	1EX15-B5		X		X	X	
6	Encapsulated	1EX15-B6		X				X

Level 6 and 5: Level 6 totally encapsulated cable, 1EX15 anchorage and greased cable covered in polyethylene, level 5 totally encapsulated cable, 1EX15 anchorage and cable covered in a polyethylene sheath, they represent the maximum unbonded and bonded protection level.